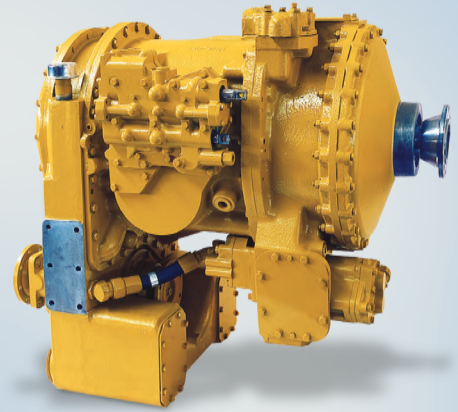


# CRT 5633 (430 HP) Powershift Cycling Transmission



## SPECIFICATIONS

General Rating+	
Net input power (max)	430 HP (320 kW)
Input speed (max)	2500 rpm
Net input torque (max)	900 lb ft (1220 Nm)

## ROTATION

Input (viewed from input)	Clockwise
Output (viewed from input)	Clockwise (forward ranges)

## MOUNTING

### DIRECT

SAE # 1 Wet type converter housing, cradle mounted using engine flywheel mounting pads and transmission drop side pads with 5/8-11 bolts.

### REMOTE

Front trunnion mounted, Mounts from both side pads required with trunnion mount.

## TORQUE CONVERTER

Type	Single Stage, 3 element, hydraulic
Stall Torque ratio	TC 580-2.89:1

## GEARING

Type	
Range Gears	Constant mesh, spur type, planetary
Transfer Gears	Constant mesh, spur type, in-line

+Ratings may vary by vocation. Consult AVTEC Marketing Department for specific information.