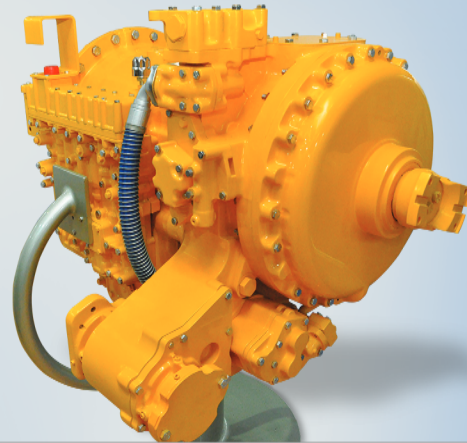


# AVTEC 5600 Series Transmission



## RATINGS

Straight - Thru Model	Input Power hp (kW)		Input Torque lb-ft (N.m)		Turbine Torque lb -ft( N.m)
	Gross	Net	Gross	Net	Net
Hauling Applications	600 (447)	550 (410)	1875 (2542)	1750 (2373)	3475 (4711)
General	600 (447)	550 (410)	1875 (2542)	1750 (2373)	3475 (4711)
Agricultural Tractor	500 (373)	450 (335)	1650 (2237)	1485 (2013)	3120 (4230)
Aircraft Rescue (ARFF) Vehicle	750 (559)	710 (529)	2500 (3390)	2270 (3078)	3790 (5139)
Oil Field Dual Mode	600 (447)	550 (410)	1875 (2542)	1750 (2373)	3475 (4711)
Oil Field Stationary	675 (503)	625 (466)	2150 (2915)	1950 (2644)	3475 (4711)

Drop Box Model	Input Power hp (kW)		Input Torque lb-ft (N.m)		Turbine Torque lb -ft( N.m)
	Gross	Net	Gross	Net	Net
Hauling Applications	600 (447)	550 (410)	1875 (2542)	1750 (2373)	3475 (4711)
General	600 (447)	550 (410)	1875 (2542)	1750 (2373)	3475 (4711)
Oil Field General	600 (447)	550 (410)	1875 (2542)	1750 (2373)	3475 (4711)

## DRIVETRAIN INTERFACE

Acceptable full load engine governed speed (max)	1900 - 2500 rpm
Minimum engine idle speed range (with transmission in drive)	550 rpm

## MOUNTING

### DIRECT

SAE No 1 automatic flywheel housing with flex plate drive. Cradle mounting using engine flywheel housing mounting pads and rear cover mounting pads( or drop box side pads if applicable) with 0.625-11 inch series bolts.

### REMOTE

Side pads on transmission rear cover (or drop box side pads if applicable) plus front trunion mount.

TORQUE CONVERTER			MECHANICA RATIOS	
<b>Type</b>	Single stage, Three element , Polyphase		<b>(Gear ratios do not include torque converter multiplication)</b>	
Model	Stall Torque Ratio	Kp-Factor* at Stall	First	4.00: 1
TC - 580	2.89	62.2 (53.4)	Second	2.68: 1
TC - 680	2.08	54.6 (46.9)	Third	2.01: 1
TC - 682	1.77	43.7 (37.5)	Fourth	1.35: 1
TC - 683	1.85	35.1 (30.1)	Fifth	1.00: 1
Kp-Factor defines torque converter capacity			Sixth	0.67:1
Kp= the ratio of converter pump speed (rpm) divided by the square root of the pump torque [lb-ft (N.m)].			Reverse 1	-5.15:1
			Reverse 2	-3.46:1
			<b>Ratio Coverage</b>	
			Forward	5.97
			Dropbox, if applicable	1.00: 1